

Anschlussrohre Joining pipes Tubes de raccordement

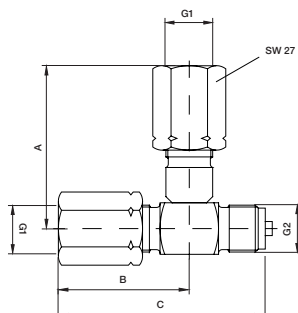
| Technische Daten | Technical Data | Caractéristiques techniques |
|--|---|--|
| Material Stahl St 1.0305, wahlweise Edelstahl 1.4571 | Materials Steel A226, alternatively stainless steel 316Ti | Matière Acier C 10 D, facultativement acier inox Z6 CNDT 17-12 |
| Zulässige Temperaturen T_{max} °C 120 °C bei 100 bar 300 °C bei 80 bar 400 °C bei 60 bar | Permissible temperatures T_{max} °C 120 °C at 100 bar 300 °C at 80 bar 400 °C at 60 bar | Températures autorisées T_{max} °C 120 °C de 100 bar 300 °C de 80 bar 400 °C de 60 bar |

| Anschlussrohr, Winkel Form Joining pipe, angle design Tube de raccordement, forme angulaire | | | | |
|---|--|--------------------------------|---------------------------------|----------|
| | Bestell-Nr. Order N° N° de commande | | Gewinde thread pas de vis | |
| | 1.0305 A 226 C 10 D | 1.4571 316Ti Z6CNDT17-12 | G1 | G |
| | 395413 | 395414 | G1/2 | Ø20 |
| | 395415 | 395416 | M20x1,5 | |
| | Anschlusszapfen, DIN 16282 Form 6 Connection, DIN 16282 Form 6 Raccordement, DIN 16282 Form 6 | | | |
| | 396643 | 396645 | G1/2 | G1/2B |
| | 396644 | 396646 | M20x1,5 | G1/2B-LH |
| | Anschlusszapfen, DIN 16282 Form 4 Connection, DIN 16282 Form 4 Raccordement, DIN 16282 Form 4 | | | |
| | 396647 | 396649 | G1/2 | G1/2B |
| | 396648 | 396650 | M20x1,5 | G1/2B-LH |
| | Anschlusszapfen, mit Sechskant Connection with hex head Raccordement, avec tête hexagonale | | | |
| | 396651 | 396653 | G1/2 | G1/2B |
| | 396652 | 396654 | M20x1,5 | |

| Anschlussrohr, gerade Form Joining pipe, straight design Tube de raccordement, forme droite | | | | |
|---|--|--------------------------------|---------------------------------|----------|
| | Bestell-Nr. Order N° N° de commande | | Gewinde thread pas de vis | |
| | 1.0305 A 226 C 10 D | 1.4571 316Ti Z6CNDT17-12 | G1 | G |
| | 395409 | 395410 | G1/2 | Ø20 |
| | 395411 | 395412 | M20x1,5 | |
| | Anschlusszapfen, DIN 16282 Form 6 Connection, DIN 16282 Form 6 Raccordement, DIN 16282 Form 6 | | | |
| | 396631 | 396633 | G1/2 | G1/2B |
| | 396632 | 396634 | M20x1,5 | G1/2B-LH |
| | Anschlusszapfen, DIN 16282 Form 4 Connection, DIN 16282 Form 4 Raccordement, DIN 16282 Form 4 | | | |
| | 396635 | 396637 | G1/2 | G1/2B |
| | 396636 | 396638 | M20x1,5 | G1/2B-LH |
| | Anschlusszapfen, mit Sechskant Connection with hex head Raccordement, avec tête hexagonale | | | |
| | 396639 | 396641 | G1/2 | G1/2B |
| | 396640 | 396642 | M20x1,5 | |

2- Wege - Verteiler Two- ways distributor Dérivation en té

| Technische Daten | Technical Data | Caractéristiques techniques |
|---|--|---|
| Material Stahl, Edelstahl 1.4571, wahlweise Messing | Materials Steel, stainless steel 316Ti, alternatively brass | Matière Acier, acier inox Z6 CNDT 17-12, facultativement laiton |
| Zulässige Temperaturen T_{max} °C 120 °C bei 250 bar, Messing 150 °C bei 400 bar, Stahl 250 °C bei 400 bar, Edelstahl | Permissible temperatures T_{max} °C 120 °C at 250 bar, brass 150 °C at 400 bar, steel 250 °C at 400 bar, Stainless steel | Températures autorisées T_{max} °C 120 °C de 250 bar, laiton 150 °C de 400 bar, acier 250 °C de 400 bar, acier inox |



| Bestell-Nr. Order N° N° de commande | | | Gewinde thread pas de vis | | mm | | | kg |
|---|-------------------------|--------------------------------|---------------------------------|----------|------|----|------|------|
| Messing brass laiton | Stahl steel Acier | 1.4571 316Ti Z6CNDT17-12 | G1 | G2 | A | B | C | |
| 390664 | 390667 | 390670 | G1/2 | G1/2B | 69,5 | 56 | 88,5 | 0,42 |
| 390663 | 390666 | 390669 | | M 20x1,5 | | | | |
| 390665 | 390668 | 390671 | | 1/2 NPT | | | | |

Stand: 25. 08. 2023